

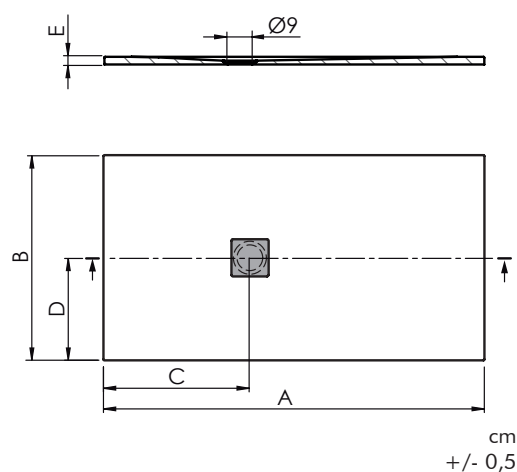
Material / Material / Matériel / Material / Materiale
sanydur gel coat slate

Color / Colour / Couleur / Cor / Colore

 White RAL9003	 Grey RAL7036
 Black RAL7021	 Cream RAL1015
 Sand RAL7032	 Moka RAL1019
 Cocoa RAL 7006	



dim.cm	A	B	C	D	E	P kg	P' kg	V cmxcmxcm
90x70	90	70	40	35	2,4	26	32	77x97x10
100x70	100	70	40	35	2,4	25	31,5	77x107x10
120x70	120	70	45	35	2,4	37	45	77x127x10
140x70	140	70	50	35	2,5	45	53,5	77x147x10
160x70	160	70	52	35	2,5	55	64	77x167x10
180x70	180	70	52	35	2,7	64	74	77x187x10
90x80	90	80	40	40	2,4	29	36	87x97x10
100x80	100	80	40	40	2,4	32	39,5	87x107x10
110x80	110	80	45	40	2,4	36	43	87x117x10
120x80	120	80	45	40	2,5	40	48	87x127x10
130x80	130	80	50	40	2,5	44	53	87x137x10
140x80	140	80	50	40	2,5	49	58	87x147x10
150x80	150	80	52	40	2,7	51	60	87x157x10
160x80	160	80	52	40	2,7	63	72,5	87x167x10
170x80	170	80	52	40	2,7	67	77	87x177x10
180x80	180	80	52	40	2,7	71	81	87x187x10
190x80	190	80	52	40	2,7	75	85	87x197x10
90x90	90	90	40	45	2,4	33	40	97x97x10
100x90	100	90	40	45	2,4	36	43,5	97x107x10
120x90	120	90	45	45	2,4	48	56,5	97x127x10
140x90	140	90	50	45	2,5	58	67	97x147x10
160x90	160	90	52	45	2,7	70	80	97x167x10
180x90	180	90	52	45	2,7	82	93	97x187x10
140x100	140	100	50	50	2,7	67	76	146x110x10
160x100	160	100	50	50	2,7	77	87,5	167x110x10
180x100	180	100	50	50	2,7	93	105	186x110x10



P: Peso neto / Net weight / Poids net / Peso líquido / Peso netto

P': Peso de expedición / Expedition Weight / Poids d'expédition/ Peso do expedição / Peso spedizione

V: Volumen de expedición / Expedition Volume / Volume d'expédition / Volume do expedição / Volume spedizione

Incluido / Included / Inclus/ Incluído / Incluso



Rejilla inox
Stainless steel grate
Grille en acier inoxydable
Grade de aço inoxidável
Griglia in acciaio inossidabile



Antideslizante clase III (ENV 12633)
Class III anti-slip (ENV 12633)
Antidérapant classe III (ENV 12633)
Antiderrapagem classe III (ENV 12633)
Anti scivolo classe III (ENV 12633)

Opcional / Optional / Optionel / Opcional / Opzionale



CORTE
Corte a la medida
Cut to fit
Coupe sur mesure
Cortado ao tamanho
Taglio su misura



	White - REJILL9227
	Grey - REJILL7036
	Black - REJILL7021
	Cream - REJILL1015
	Sand - NCS S 3005-Y20R
	Moka - NCS S 5005-Y50R
	Cocoa - NCS S 6005-Y20R

Accesorios / Accesories / Accesories / Acessórios / Accessori



REF ACC655
Desagüe Ø90 h 74 mm
Waste Ø90 h 74 mm
Bonde Ø90 h 74 mm
Ralo Ø90 h 74 mm
Scarico Ø90 h 74 mm



REF ACC656
Desagüe vertical Ø90 h 100 mm
Vertical waste Ø90 h 100 mm
Bonde verticale Ø90 h 100 mm
Ralo vertical Ø90 h 100 mm
Scarico verticale Ø90 h 100 mm



REF ACC657
Desagüe extraplano Ø90 h 53 mm
Superslim waste Ø90 h 53 mm
Bonde superslim Ø90 h 53 mm
Ralo extra-plano Ø90 h 53 mm
Scarico extra piatto Ø90 h 53 mm


Material / Material / Matériel / Material / Materiale
sanydur gel coat slate


Color / Colour / Couleur / Cor / Colore

 White RAL9003	 Grey RAL7036
 Black RAL7021	 Cream RAL1015
 Sand RAL7032	 Moka RAL1019
 Cocoa RAL 7006	

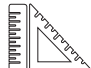



Incluido / Included / Inclus/ Incluído / Incluso








 Rejilla inox
Stainless steel grate
Grille en acier inoxydable
Grade de aço inoxidável
Griglia in acciaio inossidabile

 Antideslizante clase III (ENV 12633)
Class III anti-slip (ENV 12633)
Antidérapant classe III (ENV 12633)
Antiderrapagem classe III (ENV 12633)
Anti scivolo classe III (ENV 12633)


Opcional / Optional / Optionel / Opcional / Opzionale

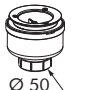
 CORTE
Corte a la medida
Cut to fit
Coupe sur mesure
Cortado ao tamanho
Taglio su misura

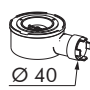


 White - REJILL9227
 Grey - REJILL7036
 Black - REJILL7021
 Cream - REJILL1015
 Sand - NCS S 3005-Y20R
 Moka - NCS S 5005-Y50R
 Cocoa - NCS S 6005-Y20R

Accesorios / Accesories / Accesories / Acessórios / Accessori

 REF ACC655
Desagüe Ø90 h 74 mm
Waste Ø90 h 74 mm
Bonde Ø90 h 74 mm
Ralo Ø90 h 74 mm
Scarico Ø90 h 74 mm

 REF ACC656
Desagüe vertical Ø90 h 100 mm
Vertical waste Ø90 h 100 mm
Bonde verticale Ø90 h 100 mm
Ralo vertical Ø90 h 100 mm
Scarico verticale Ø90 h 100 mm

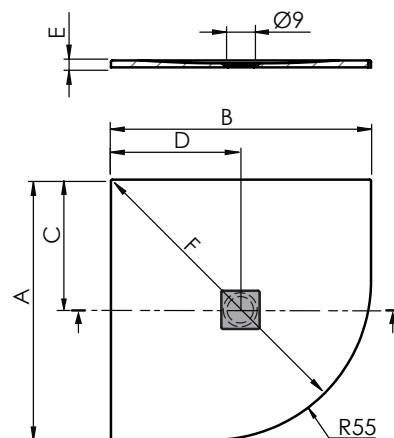
 REF ACC657
Desagüe extraplano Ø90 h 53 mm
Superslim waste Ø90 h 53 mm
Bonde superslim Ø90 h 53 mm
Ralo extra-plano Ø90 h 53 mm
Scarico extra piatto Ø90 h 53 mm

dim.cm	A	B	C	D	E	F	P kg	P' kg	V cmxcmxm
90x90	90	90	45	45	2,4	104,3	25	35	97x97x10

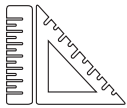
P: Peso neto / Net weight / Poids net / Peso líquido / Peso netto

P': Peso de expedición / Expedition Weight / Poids d'expédition/ Peso do expedição / Peso spedizione

V: Volumen de expedición / Expedition Volume / Volume d'expédition / Volume do expedição / Volume spedizione



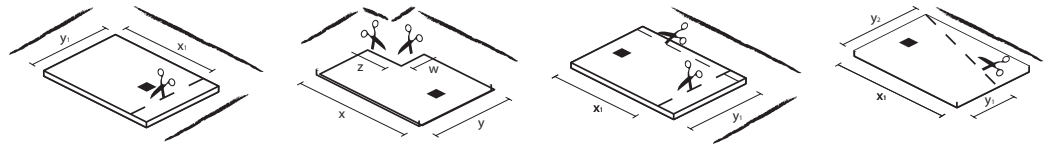
cm
+/- 0,5



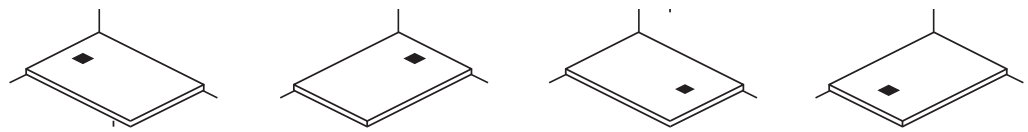
Corte a la medida
Cut to fit
Coupe sur mesure
Corte a medida
Taglio su misura

sanysize

Medidas y lados a pared
Sizes and sides to wall
Mesures et latérales au mur
Medições e laterales a parede
Misuri e lati a parete



Situación del deesagüe
Waste position
Position bonde
Posição de drenagem
Posizione di scarico



Medida estándar
Standard size
Mesure standard
Medida padrão
Misura standard



Medida con corte
Size with cut
Mesure avec coupe
Misura con corte
Misura di taglio

